

*Treaty 8 Tribal Association and GeoPraxis Inc.*  
**Connecting Communities Lands Referral Program**

4<sup>th</sup> Annual First Nations Technology Council Collaboration and Digital Literacy




February 21-24  
 Vancouver, British Columbia

## Presentation Layout

- Treaty 8 and where it is located
- Reasons for Referral Process
- How the communities handle referrals now
- The objectives of the Connecting Communities application
- Programming a referrals process
- Challenges
- Sources of Information

## Treaty 8



## Who are we?

Treaty 8 Tribal Association is governed by the Chiefs of:

Have all first nations signatory to Treaty 8 in BC unite to protect, secure and manage the land and environment for economic and cultural uses for all generations in the enhancement and implementation of the true spirit and intent of Treaty 8.



## Reason for Referral Process

Protection of Treaty Rights and to be part of an informed decision making process

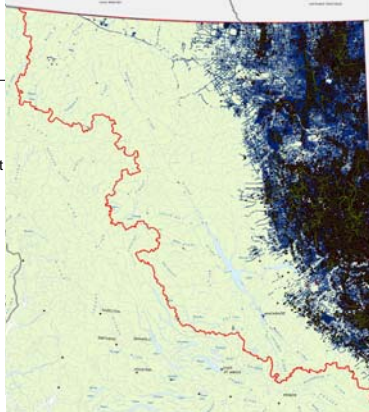
Ensure certainty of capital investments and have access to the land for business and community development

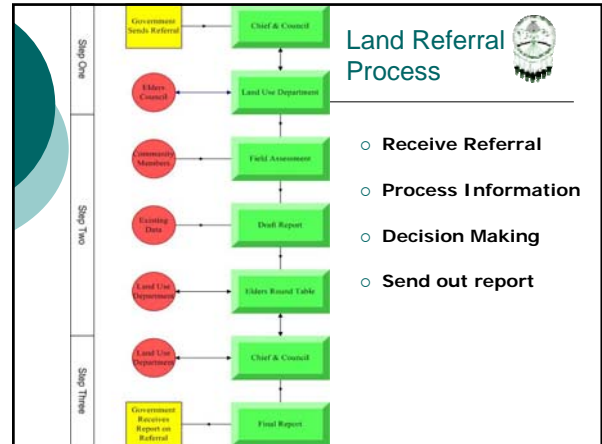
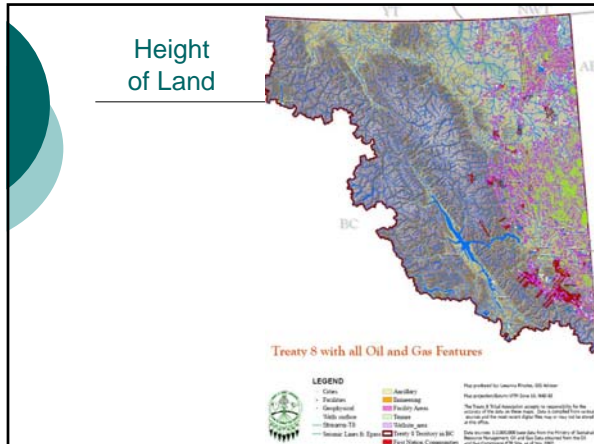
Helps meet consultation obligations, economic development and community capacity



## Oil & Gas Exploration


- Basic Land Features
- Oil and Gas Sites
- Oil and Gas Facilities
- Petroleum Development Roads
- Seismic Lines
- All together





- ## The Problem
- Geographic information technologies into daily activities.
  - Access to current and relevant data is limited.
  - Since 1999 oil and gas applications have doubled.
  - Over five years, applications to a total of 8,877.
  - Doesn't include forestry, agriculture, mining, hydro-electric and other applications.
  - 53% of referrals received required more than 10 days to review.

- ## Project Objectives
- Streamline and enhance consultation & referral process
  - Develop central data repository and web portal
  - Make existing information available for
  - Facilitate land and resource management decision-making



## Project Support

- **Communities need this, want this therefore support this.**
- **Streamlining the consultation process gets government and industries' support every time.**




## Project Team

- Our Communities Lands' Managers
- T8TA Lands Director
- DRFN Lands Manager
- T8TA GIS Advisor
- DRFN GIS Technician
- Geopraxis Inc. Contractor



Interactive Maps	Information Sites
<ul style="list-style-type: none"> <li>■ Air Photo Inventory</li> <li>■ Coastal Resource Information</li> <li>■ COINPacfic</li> <li>■ Columbia Basin - Biodiversity Atlas</li> <li>■ Columbia Basin - Large Scale Atlas</li> <li>■ Conservation Data Centre</li> <li>■ Coosquam Valley - Integrated Data Management Initiative</li> <li>■ Electronic Project Information Centre</li> <li>■ Fish Wizard - Find Fish on a Map</li> <li>■ First Nations Consultative Areas Database</li> <li>■ Forest Health</li> <li>■ Forest Mapviewer</li> <li>■ Forest Protection Branch Weather Stations</li> <li>■ Forest Recreational Sites</li> <li>■ Forest Seedmap</li> <li>■ Forestry Invasive Alien Plants</li> <li>■ Habitat Wizard</li> <li>■ Imagery Discovery Tool</li> <li>■ Itasca</li> <li>■ Integrated Land and Resource Registry</li> <li>■ Land and Resource Data Warehouse</li> <li>■ Data Distribution Service</li> <li>■ Make a Map</li> <li>■ Management of Survey Control Operations and Tasks</li> <li>■ Mineral Titles Online</li> <li>■ Online Cadastre</li> <li>■ Petroleum Titles Online</li> <li>■ Recreation Resources (Features) Inventory</li> <li>■ Remote Access to Archaeology Data</li> <li>■ Results for Forest Silviculture</li> </ul>	<ul style="list-style-type: none"> <li>■ Archaeological Information</li> <li>■ Atlas of Canada</li> <li>■ BC Mineral Titles - PDF Maps</li> <li>■ BC Online</li> <li>■ Biogeoclimatic Ecosystem Classification System (BEC)</li> <li>■ Biophysical Shore-Zone Mapping</li> <li>■ Canadian GeoBase</li> <li>■ Canadian Trail Data</li> <li>■ Conservation Data Centre</li> <li>■ CIO Natural Areas Atlas - Vancouver Island, BC</li> <li>■ Crown Land Information Services (CALDIS)</li> <li>■ Data Discovery Service</li> <li>■ Ecological Reports Catalogue</li> <li>■ Ecoregions of BC</li> <li>■ Endangered Species and Ecosystems</li> <li>■ Environmental Information / Biodiversity Publications Catalogue</li> <li>■ Environmental Information / Environmental Protection Publications Catalogue</li> <li>■ Find Fish and Fish Habitat Data</li> <li>■ Fisheries Inventory - Freshwater</li> <li>■ Fisheries and Oceans Canada</li> <li>■ Forest Management Resources - eFM</li> <li>■ EOFFER</li> <li>■ GeoConnections</li> <li>■ Geographic Names</li> <li>■ Geographic Survey Markers</li> <li>■ Geography Network</li> <li>■ Geography Network Canada</li> <li>■ InfoBasket</li> <li>■ Land and Resource Data Warehouse (LRDW)</li> <li>■ Land Title and Survey Authority</li> <li>■ Land Use Plans</li> <li>■ Land Use Plans</li> </ul>

Information Sources



## More information

- [http://www.tsa.gov.bc.ca/archaeology/archaeology\\_professionals/index.htm](http://www.tsa.gov.bc.ca/archaeology/archaeology_professionals/index.htm)
- [http://www.bforestinformation.com/northern\\_overview.asp](http://www.bforestinformation.com/northern_overview.asp)
- [http://srmwww.gov.bc.ca:8000/pls/feature\\_code/fcode.formquery](http://srmwww.gov.bc.ca:8000/pls/feature_code/fcode.formquery)
- <http://www.gov.bc.ca/for>
- <http://www.dnr.state.mn.us/mis/gis/tools/arcview/extensions/DNRGarmin/DNRGarmin.html>
- <http://www.geobase.ca/geobase/en/index.html>
- <http://geodiscover.cgd.ca/gdp/search?action=listEntries&entryType=product&Collection&selectionCriterion=topSatellites>
- <http://www.icsociety.ca/index.aspx>
- <http://www.nric.ca/>
- <http://www.mapplace.ca/>
- <https://www.ogc.gov.bc.ca/>
- <http://www.planmapper.ca/>




## In Conclusion

We would like to thank Treaty 8 for allowing us to speak on their behalf and to you for the opportunity to share with you our consultation practices.

Contact Leeanna Rhodes by telephone at (250) 785-0612 ext 238 or by e-mail at [lrhodes@treaty8.bc.ca](mailto:lrhodes@treaty8.bc.ca)

Or Stephen Kilburn  
GeoPraxis Inc.  
(519)-835-3181  
email: [skilburn@geopraxis.ca](mailto:skilburn@geopraxis.ca)

**GeoPraxis Inc.**